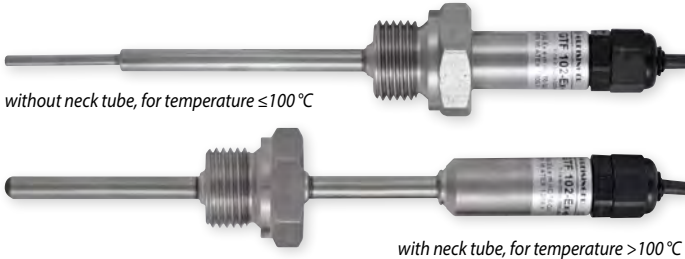


INDUSTRIAL TEMPERATURE PROBES (ATEX 100)



FOR ALL POTENTIALLY EXPLOSIVE ATMOSPHERES OF THE EQUIPMENT-GROUP II WITH THE PROTECTION (I) OR (E)

GTF 102-EX

-200 °C ... +100 °C (without neck tube)
-200 °C ... +900 °C (with neck tube)

General:
Readily assembled voltage free temperature probe of stainless steel with connection cable. The sensor inset is not exchangeable. Thread is welded or brazed to the probe.

Specifications:
Sensors:
Pt100 / Pt1000, mineral insulated element, 4-wire:
Measuring ranges: -200 °C ... +100 °C (600 °C - with neck tube), DIN cl. B
Type K; mineral insulated thermocouple:
Measuring ranges: -200 °C ... +100 °C (900 °C - with neck tube), class 1

Probe length:
up to 100 mm, upcharge per further starting 100 mm

Neck tube length:
without
upcharge per starting 100 mm

Probe diameter:
3 mm, 4 mm, 5 mm, 6 mm or 8 mm

Thread:
G1/2", G3/8" (standard)
G1/8", G1/4", G3/4", M8x1, M10x1

Cable length: (4-wire)

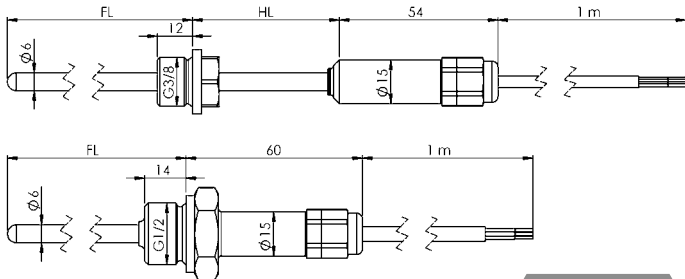
Kabelart:
Silicone cable, Surcharge per additional meter of cable
PVC, teflon (Pt100/Pt1000 only)

Ambient temperature:
-20 ... +60 °C (protection type „e“ and protection type „i“ zone 0, 20) or -20 ... +80 °C (+60 °C) (protection type „i“ zone 0/1, 1, 2, 20/21, 21, 22)

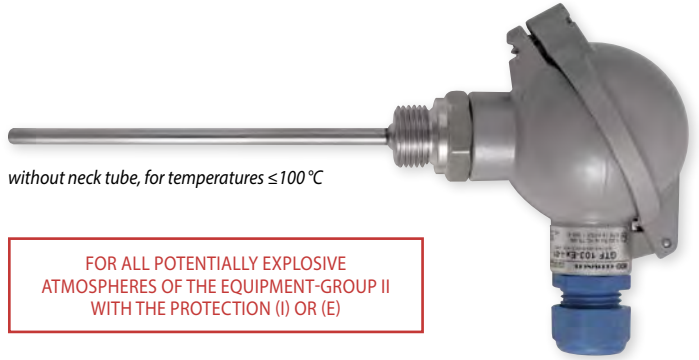
Type of protection:
„i“: intrinsic safety
„e“: increased safety (not for zone 0 and 20)

Potentially explosive atmospheres:
suitable for zone 0, zone 0/1, zone 1, zone 2, zone 20, zone 20/21, 21, zone 22

To determine exact order name ask for our type list.
Download via homepage possible



Note: Not all execution options are possible in all zones!



FOR ALL POTENTIALLY EXPLOSIVE ATMOSPHERES OF THE EQUIPMENT-GROUP II WITH THE PROTECTION (I) OR (E)

GTF 103-EX

-200 °C ... +100 °C (without neck tube)
-200 °C ... +900 °C (with neck tube)

General:
Readily assembled voltage free temperature probe of stainless steel connection head and clamping block. The sensor inset is exchangeable. Thread is welded or brazed to the probe. Mounting is done via clamping ring fitting or thread welded / brazed to the probe tube. The connection head is also suitable to carry a head transmitter.

Specifications:
Sensors:
Pt100 / Pt1000; mineral insulated element, 4-wire:
Measuring ranges: -200 °C ... +100 °C (600 °C - with neck tube), DIN cl. B
Type K; mineral insulated thermocouple (without upcharge):
Measuring ranges: -200 °C ... +100 °C (900 °C - with neck tube), class 1

Probe length:
up to 100 mm, upcharge per further starting 100 mm

Neck tube length ϕ 3 mm, 4 mm, 5 mm:
without (without upcharge)
upcharge per starting 100 mm

Probe diameter:
3 mm (the sensor inset is not exchangeable) (without upcharge)
4 mm, 5 mm, 6 mm or 8 mm (the sensor inset exchangeable)

Thread:
G1/2", G3/8" (Standard) or without thread (without upcharge)
G1/8", G1/4", G3/4", M8x1, M10x1

Ambient temperature:
Intrinsically safe version without output signal
zone 0, 20: -20 °C ... +60 °C; zone 0/1, 1, 2, 20/21, 21, 22: -20 °C ... +80 °C (+60 °C)
Intrinsically safe version with output signal 4 ... 20 mA
zone 0, 20: -20 °C ... +40 °C; zone 0/1, 1, 2, 20/21, 21, 22: -20 °C ... +50 °C (+40 °C)
Version with elevated safety: zone 1, 2, 21, 22: -20 °C ... +60 °C

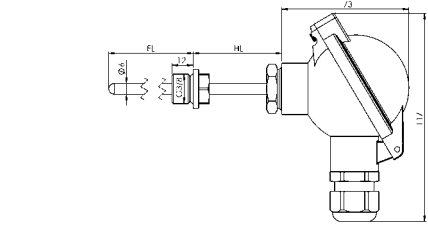
Type of protection:
„i“: intrinsic safety (without upcharge)
„e“: increased safety (not for zone 0 and 20)

Potentially explosive atmospheres:
suitable for zone 0, zone 0/1, zone 1, zone 2, zone 20, zone 20/21, zone 21, zone 22

Transmitter GITT 01-Ex
(please refer to page 54), output signal 4 ... 20 mA, measuring range on customers demands, protection type „i“ intrinsic safety.

Clamping ring screw connection:
M8x1, M10x1, G1/4" and G1/2" for diameter 3 mm, 6 mm or 8 mm.
Please refer to page 85

To determine exact order name ask for our type list.
Download via homepage possible



Note: Not all execution options are possible in all zones!



DISPLAY / CONTROLLER

LOGGER / BUS SYSTEMS

TRANSMITTER

TEMPERATURE PROBE

