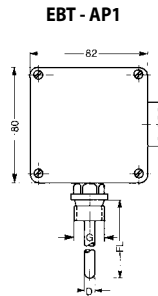


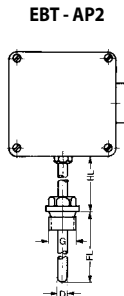
EASYBUS-SENSOR MODULES FOR TEMPERATURE



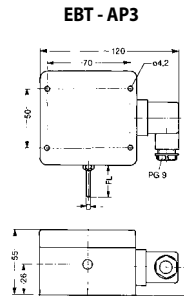
EBT - AP1  
waterproof  
IP 65



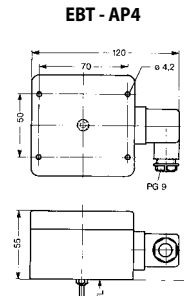
Standard:  
G = 1/2"  
FL = 100 mm  
D = 6 mm



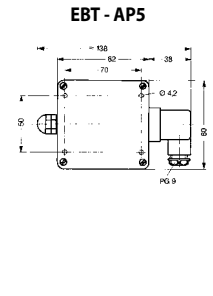
Standard:  
G = 1/2"  
HL = 50 mm  
FL = 100 mm  
D = 6 mm



Standard:  
FL = 50 mm  
D = 3 mm



Standard:  
FL = 100 mm  
D = 6 mm



**EBT-AP1**

EASYBus - sensor modules for temperature (Measuring ranges: -50.0 ... +150.0 °C)

**EBT-AP2**

EASYBus - sensor modules for temperature (Measuring ranges: -50.0 ... +400.0 °C)

**EBT-AP3**

EASYBus - sensor modules for temperature (Measuring ranges: -50.0 ... +150.0 °C)

**EBT-AP4**

EASYBus - sensor modules for temperature (Measuring ranges: -50.0 ... +150.0 °C)

**EBT-AP5**

EASYBus - sensor modules for temperature (Measuring ranges: -199.9 ... +650.0 °C)

**EBT-SHUT**

EASYBus - sensor modules for temperature incl. heat absorption hat (Measuring ranges: -25.0 ... +80.0 °C)

**Design types:**

<b>EBT-AP1:</b>	With threaded pin „G“ for direct screw connection.
<b>EBT-AP2:</b>	For higher temperatures, threaded pin „G“ at a distance from housing. HL = collar tube length.
<b>EBT-AP3:</b>	Indoor or outdoor probe for direct wall mounting (encapsulation of electronics required for outdoor use).
<b>EBT-AP4:</b>	Duct-type probe with probe tube arranged centrally and pointing downwards.
<b>EBT-AP5:</b>	Transducer for existing Pt1000 sensors or for applications where probe and housing need to be separated (e.g. extremely high ambient temperature or due to design reasons).
<b>EBT-SHUT</b>	without illustration; see next page

Other design types upon request - please do not hesitate to contact us!

**Specifications:**

**Measuring ranges:**

<b>AP1, AP3, AP4:</b>	-50.0 ... +150.0 °C or -58.0 ... +302.0 °F
<b>AP2:</b>	-50.0 ... +400.0 °C or -58.0 ... +752.0 °F
<b>AP5:</b>	-199.9 ... +650.0 °C or -199.9 ... +999.9 °F
<b>SHUT:</b>	-25.0 ... +80.0 °C or -13.0 ... +176.0 °F
<b>Sensor element:</b>	Resistance thermometer Pt1000 acc. to DIN IEC 751
<b>Resolution:</b>	0.1 °C / 0.1 °F
<b>Accuracy (electronic):</b>	(at nominal temperature = 25 °C) ±0.2 % of meas. value ±0.2 °C
<b>Sensor-Accuracy:</b>	(Pt1000)
<b>Standard:</b>	acc. to DIN cl. B (±0.3 °C at 0 °C)
<b>Option:</b>	DIN cl. AA: ±0.1 °C at 0 °C

**Electric connection:** elbow-type plug EN 175301-803/A (IP65), output 2-wire connection, max. 1.5 mm<sup>2</sup> each, no polarity

**Sensor connection:** 2-wire connection available (e.g. EBT - AP5)

**Ambient temperature (electronic):** -25 ... +70 °C

**Mounting position:** any

**Fixing:** by means of screw-thread or fixing holes in the housing (accessible after top cover has been removed)

<b>Mounting distance:</b>	50 x 70 mm
<b>Fixing screws:</b>	max. shaft Ø: 4 mm
<b>Sensor mounting:</b>	sensors are electrically insulated as a standard.
<b>Thread sizes G:</b>	1/2" (standard) material V4A
<b>Housing:</b>	Material: ABS, protection class: IP65
<b>Dimensions:</b>	82 x 80 x 55 (L x B x H)
<b>Scope of supply:</b>	Device, manual

EBT - 1 - 2 - 3 - 4 - 5 - 6 - 7

Greisinger	
1.	Version
	AP1 With thread, without extension tube
	AP2 With thread, with extension tube
	AP3 Indoor and outdoor sensor
	AP4 Channel sensor
	AP5 For external sensor connection
	SHUT Radiation cap / weather protection incl. „-LACK“
	AP Circuit board alone
2.	Fitting length EL
	No installation length, With KABEL / SHUT
	050 50 mm, Standard with AP3
	060 60 mm
	100 100 mm, Standard with AP1, AP2, AP4
	150 150 mm
	250 250 mm
3.	Extension tube length
	050 50 mm
4.	Probe diameter D
	03 Ø3 mm, Standard AP3
	04 Ø4 mm
	05 Ø5 mm
	06 Ø6 mm, Standard AP1/2/4
	08 Ø8 mm
5.	Thread
	G1 G 1/2
6.	Option
	LACK Coated PC Board
	VO Local display
7.	Measuring range
	-25 ... +85 °C
	MB1 -50 ... +150 °C
	MB2 -50 ... +400 °C
	MB3 -199.9 ... +650 °C