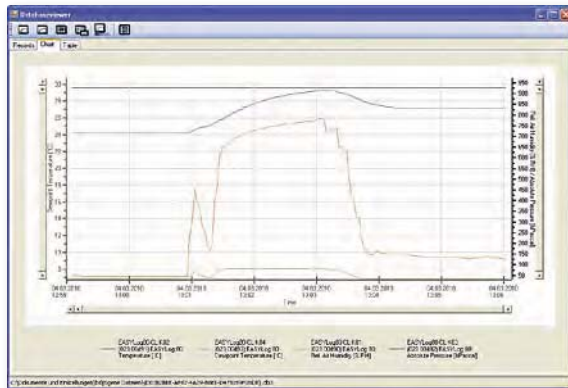


## SOFTWARE FOR MEASUREMENT DATA ACQUISITION



## HIGHLIGHTS:

- Real time monitoring of measuring data
- Simultaneous use of several serial interfaces

**EBS 20M**

Art. no. 601158

Measuring data acquisition software for EASYBus &amp; GMH, 20 channel

**EBS 60M**

Art. no. 601160

Measuring data acquisition software for EASYBus &amp; GMH, 60 channel

**General:**

This software makes up a low-price and comfortable multi-channel acquisition program for measuring data. The program is suitable for recording, monitoring, visualization and documentation.

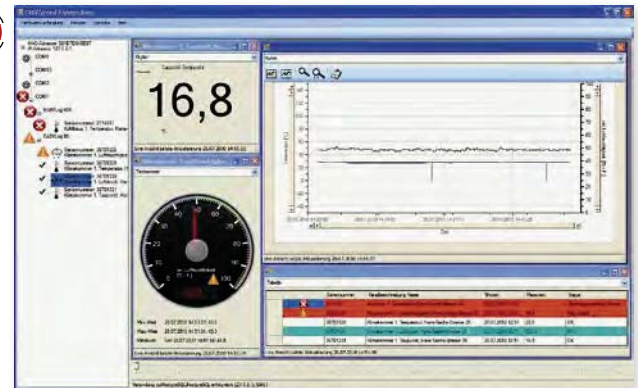
**Application:**

- On-site recording
- Process and system control, monitoring of climate and buildings
- Real time monitoring of measuring data i.e. for data evaluation and logging for cost listings, overview of consumption, optimisation of processes, and other statistics

**Specifications:**

<b>Program version:</b>	Application with user interface
<b>Data backup:</b>	File (SQLite)
<b>Export formats:</b>	*.csv
<b>Languages:</b>	German English
<b>Access control:</b>	-
<b>Remote access:</b>	-
<b>Alarms:</b>	optical in the interface
<b>Devices:</b>	EASYBus devices (via EASYBus level converter) GMH 3000 series (via GRS 3100 or USB 3100N) GMH 5000 series (via USB 5100) GDUSB 1000 (in standard mode)
<b>Several interfaces:</b>	usable at the same time
<b>Recording interval:</b>	from 0.5 s
<b>Live display:</b>	Yes
<b>Reading of data loggers:</b>	No
<b>System requirements:</b>	Microsoft Windows 7 SP1 (32 or 64 Bit) Not executable with Windows RT, Windows 10 in S Modus, ARM or Intel Itanium based Windows systems
<b>Scope of supply:</b>	DVD, manual

## EASYBUS-SOFTWARE



## HIGHLIGHTS:

- Visualisation via LAN
- User accounts
- Simultaneous use of several serial interfaces
- Create reports from measured data

**EASYControl net**

Art. no. 601152

Network-compatible measurement data detection

**General:**

This software allows cost-efficient network-compatible data logging and monitoring systems. The visualization can be done by any computer in the network.

**Application:**

Long-term monitoring of climate cabinets and cooling cabinets.  
When a visualisation of distributed measuring points should take place.

**Specifications:**

<b>Program version:</b>	Application with user interface
<b>Data backup:</b>	Database (PostgreSQL)
<b>Export formats:</b>	*.doc (Word) *.xls (Excel) *.pdf (Adobe Reader)
<b>Languages:</b>	German English
<b>Access control:</b>	Dedicated user login
<b>Remote access:</b>	In the local network
<b>Alarms:</b>	optical in the interface Relay control via EBB Out
<b>Devices:</b>	EASYBus devices (via EASYBus level converter) GMH 3000 series* (via GRS 3100 or USB 3100N) GMH 5000 series* (via USB 5100)
<b>Several interfaces:</b>	usable at the same time
<b>Recording interval:</b>	from 5 s
<b>Live display:</b>	Yes
<b>Reading of data loggers:</b>	No
<b>System requirements:</b>	Microsoft Windows 7 SP1 (32 or 64 Bit) Not executable with Windows RT, Windows 10 in S Modus, ARM or Intel Itanium based Windows systems
<b>Scope of supply:</b>	DVD, manual

\* Only devices with a unique serial number (printed on the type plate)