

**Product information**

**Computer Controlled Measurement Amplifiers**

**Data Acquisition Software**

An extensive functional library "DataEngine.dll" is available for integrating the systems into an own data acquisition software or environment. It transmits triggers and measurement data, and receives the other way parameters for the central unit like sample rates, trigger conditions and information about the selected channels

**Characteristics**

The **Measurement Software DAQSoft** offers acquisition and visualization of data for DASIM and SIQUAD systems. First parameters of the amplifiers are set with DaSoft. DaSoft provides the system settings and generates an interface file "DDL.int" with the necessary specifications for data acquisition. DAQSoft takes this information of the "DDL.int" automatically. The file is always updated with actual data after each communication of DaSoft with the measurement system. If changes were done in the system with DaSoft, it will be automatically recognized by DAQSoft and notified. Therefore it is not possible to measure with wrong parameters.

DaSoft and DAQSoft are running under Windows 2000, Windows XP, Windows 7 (32 and 64 bit). DAQSoft also needs a .NET environment. For acquisition with high sample rate and therefore large amount of data, a computer starting with Dual-Core processor (or comparable) and 2.5 GHz, 4 GB RAM, and fast hard disk is recommended.

DAQSoft offers essentially the following features:

**Measurement:**

- Measurement over time, X/Y measurement
- Measurement with several systems and different IP addresses
- Signal acquisition of various data formats from a CAN Interface
- Different settings for triggers, combined with level monitoring
- Recurring measurement (serial measurement)
- Setting of automatic saving intervals
- Measurement with on-line view and pre-monitoring
- Acquisition of Video data from a DigiCam synchronous with measurement data
- Acquisition of GPS data and route tracing synchronous with measurement data

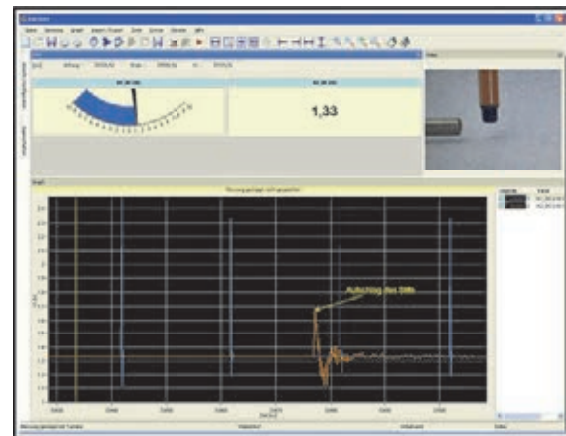
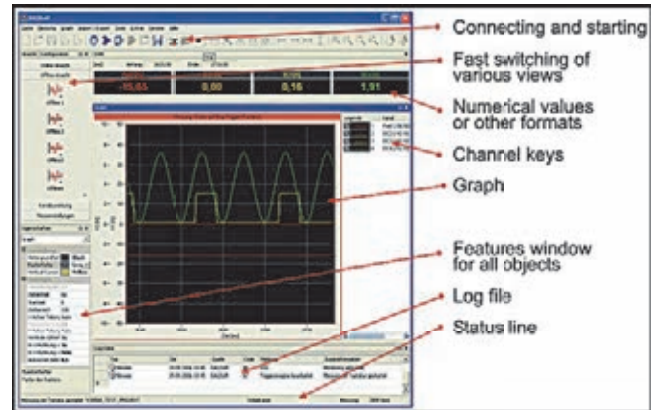
**Visualization and processing:**

- Visualization of data in a graph (main, side, stacked graphs)
- Visualization as instantaneous value (analog, numerical) and in tabular form
- Visualization of video data as single pictures
- Import of video data in AVI format
- Real time information
- Analysis of saved measurements with zoom and cursor modes
- Comparison of measurements
- Combination of measurements
- Mathematical post-processing of selected measurement channels
- Post-filtering of selected measurement channels
- Analysis with FFT and power spectrum

**Exports, reports, miscellaneous:**

- Export function into other data formats like Famos, DIAdem, ASCII, MATLAB
- Export of video data in AVI format or as single picture
- Generating different reports as HTML or Crystal report with different layouts
- Event logging with log file
- Project based directory structure

Drivers for other Windows-based data acquisition software like DASyLab and LabVIEW are optionally available.



**Ordering Codes**

**Data acquisition software**

- DASIM-SW-DAQSOFT
- SIQUAD-SW-DAQSOFT

**Drivers**

- DASIM-SW-TR-DAS for DASyLab
- DASIM-SW-TR-LAB for LabVIEW
- SIQUAD-SW-TR-DAS for DASyLab
- SIQUAD-SW-TR-LAB for LabVIEW