

Product information

Wireless data loggers GHM DeltaBus

**Wireless data logger
 HD35EDW7P/...TC
 HD35EDLW7P/...TC**



- **Waterproof 1, 2 or 3-input temperature wireless data logger for Pt100/Pt1000 sensor temperature probes with cable**

Characteristics

Temperature wireless data logger. IP 67 waterproof housing. Custom LCD display (only with option L). It stores the measures in its internal memory (from 42,000 to 68,000 samples depending on the number of inputs) and transmits the logged data to the base unit automatically at regular intervals or upon request.

Depending on the model, one, two or three inputs with M12 connector for temperature probes with Pt100/Pt1000 sensor:

- **HD35EDW7P/1 – HD35EDLW7P/1: one input (68,000 samples)**
- **HD35EDW7P/2 – HD35EDLW7P/2: two inputs (52,000 samples)**
- **HD35EDW7P/3 – HD35EDLW7P/3: three inputs (42,000 samples)**

Acoustic alarm with internal buzzer. Configuration via HD35AP S software. Powered by the internal battery. Installation: wall mounting with HD35.24W flange (optional) or fixing to a Ø 40 mm mast with HD2003.77/40 clamping (optional). Protection shield against solar radiations HD9217TF1 (optional) for outdoor installation. External antenna for outdoor installation with protection shield against solar radiations. Internal antenna for indoor installation.

Technical data

Temperature	
Sensor	: Pt100 / Pt1000 1/3 DIN thin film
Measuring range	: -100...+350 °C (the measuring range can be limited by the operating temperature of the used sensor)
Resolution	: 0.1 °C
Accuracy	: 1/3 DIN
Long-term stability	: 0.1 °C / year
Instrument	
Transmission frequency	: Factory configurable at choice among: 868 MHz, 902-928 MHz, 915-928 MHz, 921-928 MHz or 915,9-929,7 MHz depending on the frequency in use in the country of installation
Transmission range	: In open field: 300 m (E, J)/ 180 m (U) with internal antenna. > 500 m (E, J, U) with external antenna. (can be reduced in presence of obstacles or adverse atmospheric conditions)
Logging interval	: 5, 10, 15, 30 s / 1, 2, 5, 10, 15, 30, 60 min
Power supply	: Non rechargeable lithium thionil chloride (Li-SOCl ₂) internal battery, 3.6 V, AA format, 2-pole Molex 5264 connector
Battery life	: 2 years typ. (without repeaters, measurement interval 10 s and log interval 30 s)
Operating conditions	: -20...+70 °C / 0...100 %RH non condensing
Dimensions	: 129 x 80 x 55 mm (excluding probes and external antenna)
Weight	: 250 g approx.
Housing	: Polycarbonate
Protection degree	: IP 67

Product information

Wireless data loggers GHM DeltaBus

Sensors

TP35.1...: stainless steel temperature sensor. 3-wire 1/3 DIN Pt1000 sensor. Operating temperature: -50...+105 °C. Dimensions: Ø 6 x 50 mm. 4-pole M12 connector.



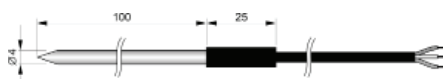
TP35.2...: thermoplastic rubber temperature sensor. 3-wire 1/3 DIN Pt1000 sensor. Operating temperature: 0...+70 °C. Dimensions Ø 5 x 20 mm. 4-pole M12 connector.



TP35.4...: stainless steel temperature sensor. 4-wire 1/3 DIN Pt100 sensor. Operating temperature: 50...+105 °C. Dimensions: Ø 6 x 50 mm. 4-pole M12 connector.



TP35.5... stainless steel penetration temperature sensor. 3-wire 1/3 DIN Pt1000 sensor. Operating temperature: -40...+300 °C. Dimensions: Ø 4 x 100 mm. 4-pole M12 connector.



Ordering codes

HD35ED - ^{1.} ^{2.} ^{3.} W7P/ TC.

1.	LCD
0	without LCD
L	with custom LCD
2.	Number of inputs
0	1
1	2
2	3
3.	Radio frequency
J	915.9-929.7 MHz (Japan)
E	868 MHz (Europe)
U	902-928 MHz (U.S.A. and Canada) reducible to 915-928 MHz (Australia) or 921-928 MHz (New Zealand)

Ordering codes sensors

TP35.1. - ^{1.} /C

1.	Cable length
0	cable 2 m
1	cable 5 m
2	cable 10 m

TP35.2. - ^{1.} /C

1.	Cable length
0	cable 3 m
1	cable 5 m

TP35.4. - ^{1.} /C

1.	Cable length
0	cable 3 m
1	cable 5 m
2	cable 10 m

TP35.5. - ^{1.} /C

1.	Cable length
0	cable 3 m
1	cable 5 m