

Product information

Temperature - Hygienic Design

Accessories

GTL - Configuration tool

Suitable for all GTL with integrated transducer GTML1 / 2

The GTL - Configuration tool contains:

- Software GTL - Configurator**
Setting of unit, resolution, measuring range, filter, output in case of error, etc.



- GTL - Configuration adapter**
- Connection cable with M12 plug**
- Connection cable with loose ends**
- Connection cable with crocodile clamps**
- GKK 252 case**
with burl foams size: 235 x 185 x 48 mm (W x H x D)
- Manual**



System requirements

32 or 64 bit version of Windows XP SP3, Windows Vista, Windows 7, Windows 8 (not working with Windows RT, ARM or Intel Itanium based Windows systems)

Accessories

KM4P-GTL34

Connection cable with M12 plug for configuration of temperature sensors with double Pt100 for design type 1 x cable connection M12 plug with 2 x transducer

Compression fitting for GTL

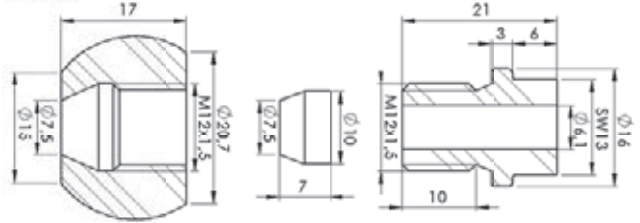
GKEV-25/76

Spherical weld-in sleeve for inclined mounting, containing weld-in sleeve, PEEK clamp ring and clamp screw.



- Specifications:**
- Material : V4A (1.4404)
 - Type of installation : PEEK clamping ring, thread M12x1.5
 - Clamping torque : max. 10 Nm
 - Working pressure : max. 10 bar
 - Application : for mounting of temperature probes of series: GTL 349, GTL 369 / M, GTL 389 / M

Design:



- Spare parts:**
 Clamp screw KS-M12
 PEEK clamp ring PKR-6



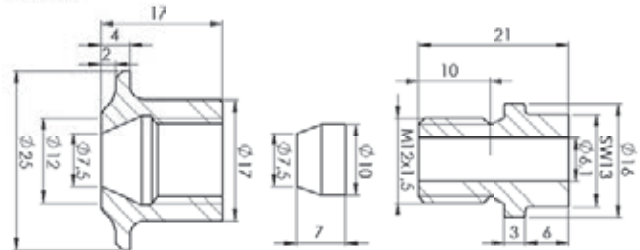
GEMK-25/76

Collar welding sleeve for tanks thick / thin, containing weld-in sleeve, PEEK clamp ring and clamp screw.



- Specifications:**
- Material : V4A (1.4404)
 - Type of installation : PEEK clamping ring, thread M12x1.5
 - Clamping torque : max. 10 Nm
 - Working pressure : max. 10 bar
 - Application : for mounting of temperature probes of series: GTL 349, GTL 369 / M, GTL 389 / M

Design:



- Spare parts:**
 Clamp screw KS-M12
 PEEK clamp ring PKR-6

