

Product information

Flow - rotor, inline model

**Flow Indicator
FR-...GR**



- Rotor on both sides directly behind natural glass
- Installation location as desired

Characteristics

Mechanical flow indicator, for fluid media, with twin rotor for quantitative flow display. The rotor turns in proportion to the flow. Robust construction in red bronze/brass

Technical data

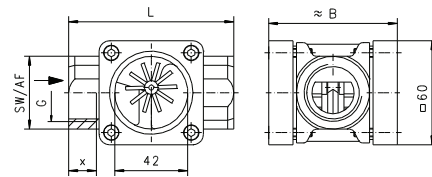
Nominal width	DN 15..25	
Process connection	female thread G 1/2..G 1	
Display range	2.5..65 l/min	for details see table "Ranges"
Q_{max.}	to 65 l/min	
Pressure resistance	PN 16 bar	
Medium temperature	0..+100 °C	
Ambient temperature	0..+100 °C	
Materials medium-contact	Rg 5, CW614N, soda lime glass, POM Klingersil C4400	
Medium	water (oils have a tendency to a higher running-up value)	
Weight	see table "Dimensions and weights"	
Installation location	as desired, except for inwards flow from above	

Ranges

G	Types	Running-up amount for rotor l/min H ₂ O	Q _{max.} recommended
G 1/2	FR-015GR	2.5	25
G 3/4	FR-020GR	3.0	45
G 1	FR-025GR	5.0	65

Dimensions and weights

G	Types	L	B	SW	X	Weight kg
G 1/2	FR-015GR	85	68	38	14	1.20
G 3/4	FR-020GR					1.10
G 1	FR-025GR	95	74	42	16	1.25



Ordering code

FR - 1. 2. 3.
 G R

1. Nominal width	
015	DN 15 - G 1/2
020	DN 20 - G 3/4
025	DN 25 - G 1
2. Process connection	
G	female thread
3. Connection material	
R	red bronze