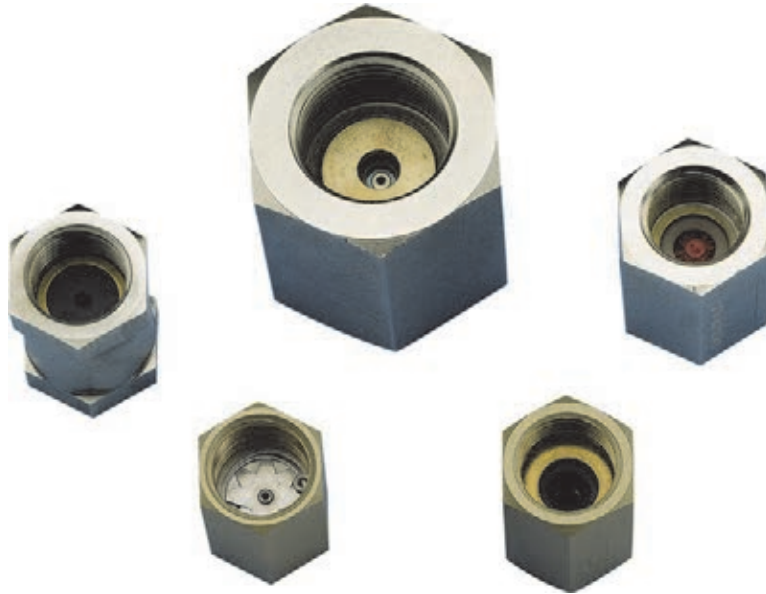


Flow - diaphragm / limiter



Characteristics

System	Flow Diaphragm limiter
Nominal widths	DN 15 - 80
Controlled quantity	0.5..210 l/min
Media	Water Oils
Pressure resistance	Max. 200 bar
Temperature	0..+300 °C

Applications

- Central feed
- Water treatment
- Irrigation
- Sanitation installations

Product information

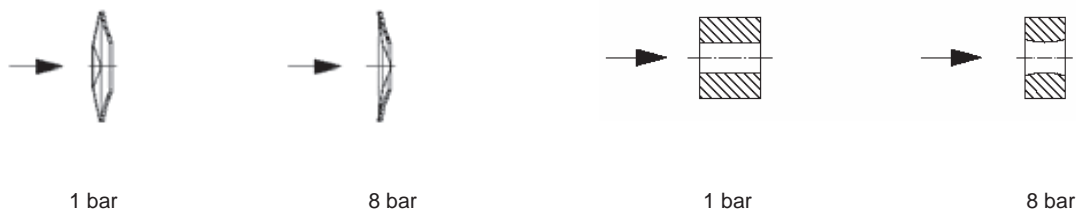
Flow - diaphragm / limiter

Function and benefits






The medium creates a differential pressure on the diaphragm which causes metal or elastomer elements to be pressed together. This creates a reduction in cross-section which restricts the flow to a fixed value.

Stainless steel diaphragm

Elastomer diaphragm



Device overview

Device	Nominal width	Connection	Controlled value l/min	Materials		Pressure resistance in bar	Medium temperature	Medium	Page	
				Housing	Diaphragm					
KM-...G		DN 15..20	Female thread G 1/2..G 3/4	1..30	Brass or stainless steel	stainless steel	PN 200	0..300 °C	Water, oils	3
KM-...A		DN 20 - 80	Male thread G 3/4 A..G 3 A	1..210	Brass or stainless steel	stainless steel	-	0..200 °C	Water	4
WK		DN 15..25	Female thread G 1/2, G 1	3..15	Brass or stainless steel	Elastomer	PN 100	0..65 °C	Water	5
WP		DN 15	Female thread G 1/2	0.5..20	Brass	Elastomer	PN 16	0..70 °C	Water	6
WT		DN 15	Female thread G 1/2	5..13.5	Brass	Elastomer	PN 100	0..100 °C	Water	7

Errors and technical modifications reserved.