

Product information

Level, calorimetry - Hygienic Design

**Device Configurator
 ECI-1**



- **Can be used on site for:**
 - parameter modification
 - firmware update
 - adjustment of inputs and outputs
- **Can be connected via USB**

Characteristics

The device configurator ECI-1 is an interface which allows the connection of microcontroller-managed HONSBERG sensors to the USB port of a computer. Together with the Windows software "HONSBERG Device Configurator" it enables

- the modification of all the sensor's configuration settings
- the reading of measured values
- the adjustment of inputs and outputs
- firmware updates

Technical data

Supply voltage	12..30 V DC (depending on the connected sensor) and via USB
Power consumption	< 1 W
Connection	
Sensor	cable bushing M12x1, 5-pole, straight length approx. 50 cm
Lead	device connector M12x1, 5-pole
USB	USB bushing type B
Operating temperature	0..50 °C
Storage temperature	-20..+80 °C
Dimensions of housing	98 mm (L) x 64 mm (W) x 38 mm (H)
Housing material	ABS
Ingress protection	IP 40

Handling and operation

Connection



The device configurator is intended for temporary connection to the application. It is connected between the the existing sensor lead and the sensor. Power supply is via the supply to the sensor and the computer's USB port. When inactive (no communication), the configurator behaves completely neutrally; all signals from the sensor remain available to the application. During communication between computer and sensor, the signal wirings are separated in the configurator, so that in this state the sensor's output signals are not available.

To connect 4-pole leads without a middle hole to the installed 5-pole device connector, adapter K04-05 is included. 4-pole leads with a middle hole can be used without an adapter.

Ordering code

Device configurator (for scope of delivery, see the diagram below)	ECI-1
--	--------------

Scope of delivery

1. Device configurator ECI-1
2. USB cable
3. Adapter K04-05
4. Plug KB05G
5. Cable K05PU-02SG
6. Carrying case



Incl. software

Accessories:

Mains connector 24 V DC (with fitted round plug connector, 5-pole, incl. international plug set)	EPWR24-1
--	-----------------



Replacement parts:

M12x1 adapter 4- / 5-pole	K04-05
PUR cable, 5-pole, shielded with round plug connector M12x1	K05PU-02SG
Round plug connector M12x1, 5-pole (without cable)	KB05G

Product information

Level, calorimetry - Hygienic Design

**Hygienic
Connection Cable
Shielded Series KH**



- Connection M12x1
- PVC cable flexcord grey shielded
- Straight or angled model
- 4- or 5-pole, cable end made up with end sleeves for wires
- Union nut made from V4A
- IP67 as per IEC 60529
- IP 69K protected against water during high pressure and steam jet cleaning as per IEC 60529
- Resistant to heat and cold, range of use -25..+70 °C
- Vibration protection
- Colour coding as per industry standards

Characteristics

The connection cable is suitable for moderate mechanical stress. Good resistance to acids and alkalis. Therefore aimed mainly at food and drink industries. Restricted abrasion behaviour, and limited oil and chemical resistance. The shielding increases the shear strength, and also improves the protection from external radiation interference.

Technical data

Connector	connection M12x1
Grip body	plastic, PVC
Union nut	stainless steel 1.4404
Contact block / Cable	grey plastic PVC
Contacts	metal, CuZn, gold-plated
Seal	plastic, FPM, FKM
Current carrying capacity	4 A
Rated voltage	max. 250 V
Insulation resistance	≥ 10 ⁹ MΩ
Degree of contamination	3/2, as per DIN VDE 0110
Ambient temperature	-25..+70 °C
Ingress protection	IP 67 / IP 69K (only when screwed together)
Mechanical working life	min. 100 mating cycles

Cable colours:

1 = brown, 2 = white, 3 = blue, 4 = black, 5 = grey

Ordering code

KH - -

1. Cable material	PV	PVC
2. Cable length	002	2 metres
	005	5 metres
	010	10 metres
3. Shielding	1	shielding (not applied to union nut)
4. Number of poles	04	4-pole
	05	5-pole
5. Connector output	G	straight
	W	angled 90 °

Product information

Level, calorimetry - Hygienic Design

Process adaptation for HFK, HTK, HLK..



- Hygienically-appropriate process adaptation free of dead spaces and elastomers for wide-ranging applications in the food production industry.

Characteristics

The hygienically design cone of the sensor is pressed against the sealing edge of the welded sleeve when screwed on with the prescribed torque, whereby a hygienically-correct seat of the respective sensor is provided.

Technical data

Process connection	GHMadapt G 1/2
Torques	thread G 1/2, VA / VA, 5 - 20 Nm
Material	stainless steel 1.4404, AISI 316L 2.2 Certification or 3.1 Certification optional
Working temperature	metal-metal seal max. 250 °C see the sensors to be installed for restrictions
Operating pressure	metal-metal seal max. 50 bar see the sensors to be installed for restrictions

Dimensions

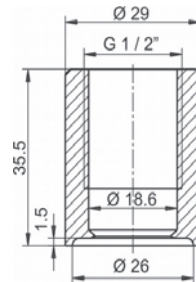
Cylindrical sleeve

for containers



APH-112

with welded collar for extrusion



APH-122

Accessories for cylindrical sleeves

Blank plug G 1/2



AMH-112

Weld-on aid G 1/2 (Material: brass)

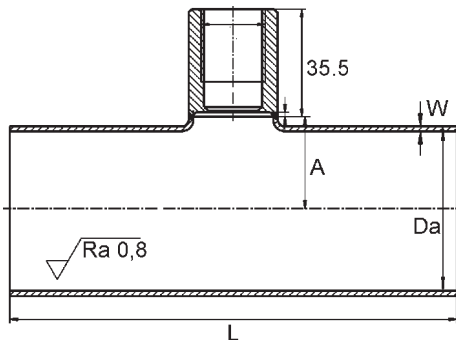


AMH-122

Product information

Hygienic weld-on fittings, series APH,

DIN 11850 series 2



Process connection GHMadapt G 1/2					
	DN	L	A	Da x W	
APH-532	25	100	15	29 x 1.5	
APH-542	40	120	22	41 x 1.5	
APH-552	50	140	29	53 x 1.5	
APH-562	65	160	38	70 x 2.0	
APH-572	80	180	46	85 x 2.0	available on request
APH-582	100	200	55	104 x 2.0	available on request

Other standard pipe sizes on request

Accessories for weld-on fittings

Blank plug G 1/2



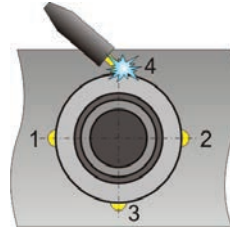
AMH-112

Level, calorimetry - Hygienic Design

Handling and operation

Installation

Welding in tanks or large pipework



Sections at G 1/2

1. Drill hole with outside diameter of the sleeve, max. tolerance +0.2 mm
2. Tack on sleeve at four points (observe the sequence of the tacking)
3. Screw in the weld-on aid (see AMH112, AMH122)
4. Weld the sections between the weld points.

In order to avoid the red heating or distortion of the sleeve during the welding process, it is necessary to take pauses between the individual sections so that the sleeve can cool down.

Welding in pipework

There are also ball sleeves in addition to the APH pipe system or sleeves with a welded collar are available for pipes with an extrusion (please request).

Ordering code

Weld-on adapter

APH-112	Cylindrical sleeve for container in G 1/2
APH-122	Cylindrical sleeve with welded collar for extrusion (G 1/2)

T-piece according to DIN11850 series 2

APH-532	T-piece DN 25
APH-542	T-piece DN 40
APH-552	T-piece DN 50
APH-562	T-piece DN 65
APH-572	T-piece DN 80
APH-582	T-piece DN 100

Accessories

AMH-112	Blank plug G 1/2
AMH-122	Weld-on aid G 1/2